



Solid Timber Core Composite Doors

 **ncore**

 **FIFE WINDOWS
AND DOORS LTD**

WINDOWS . DOORS . CONSERVATORIES . GARAGE CONVERSIONS . ROOFLINE



Solid to the core

The Encore Range is the ultimate in composite door technology and performance. Meticulously constructed from 48mm solid engineered timber core to provide reassuring strength and rigidity, not to mention its proven resistance to warping, twisting and bowing.

Encore doors also use advanced Cool Skin heat reflective door skin technology to reduce heat absorption, and offer improved scratch resistance and weather performance.

The Encore range has been carefully produced using only the highest quality materials, built to last and has been subject to rigorous testing, giving homeowners total peace of mind.





Blenheim | Encore range

Blenheim Glazing Options



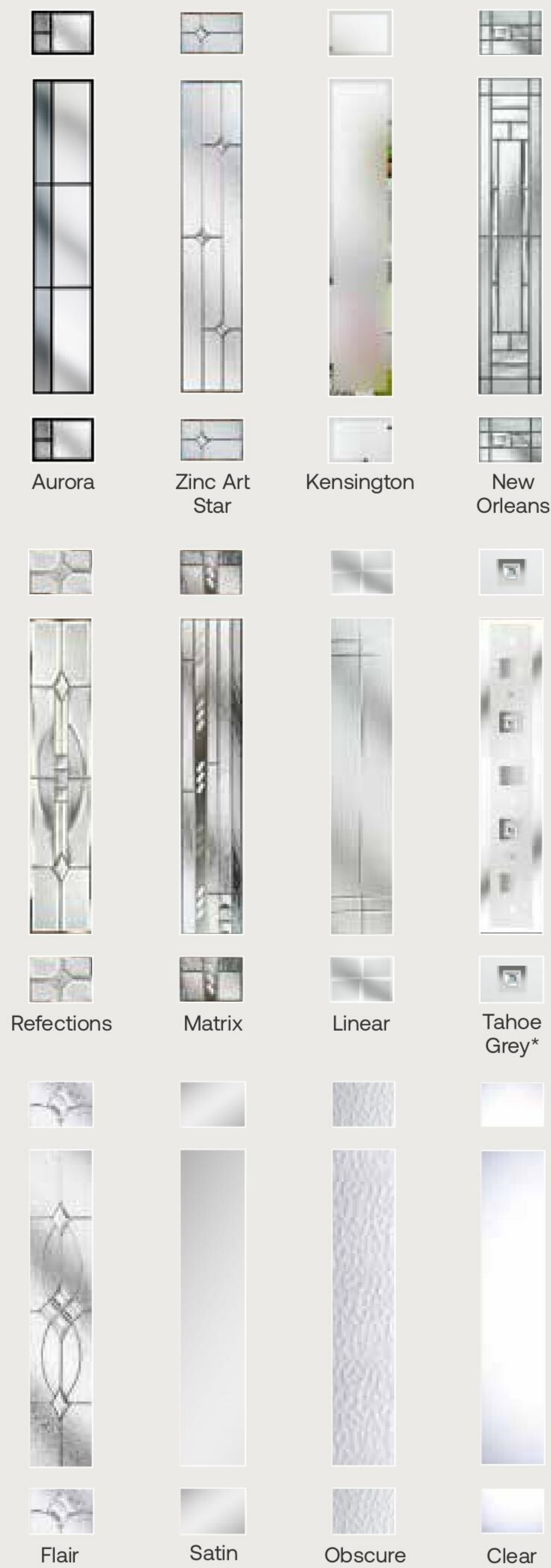
Colour options



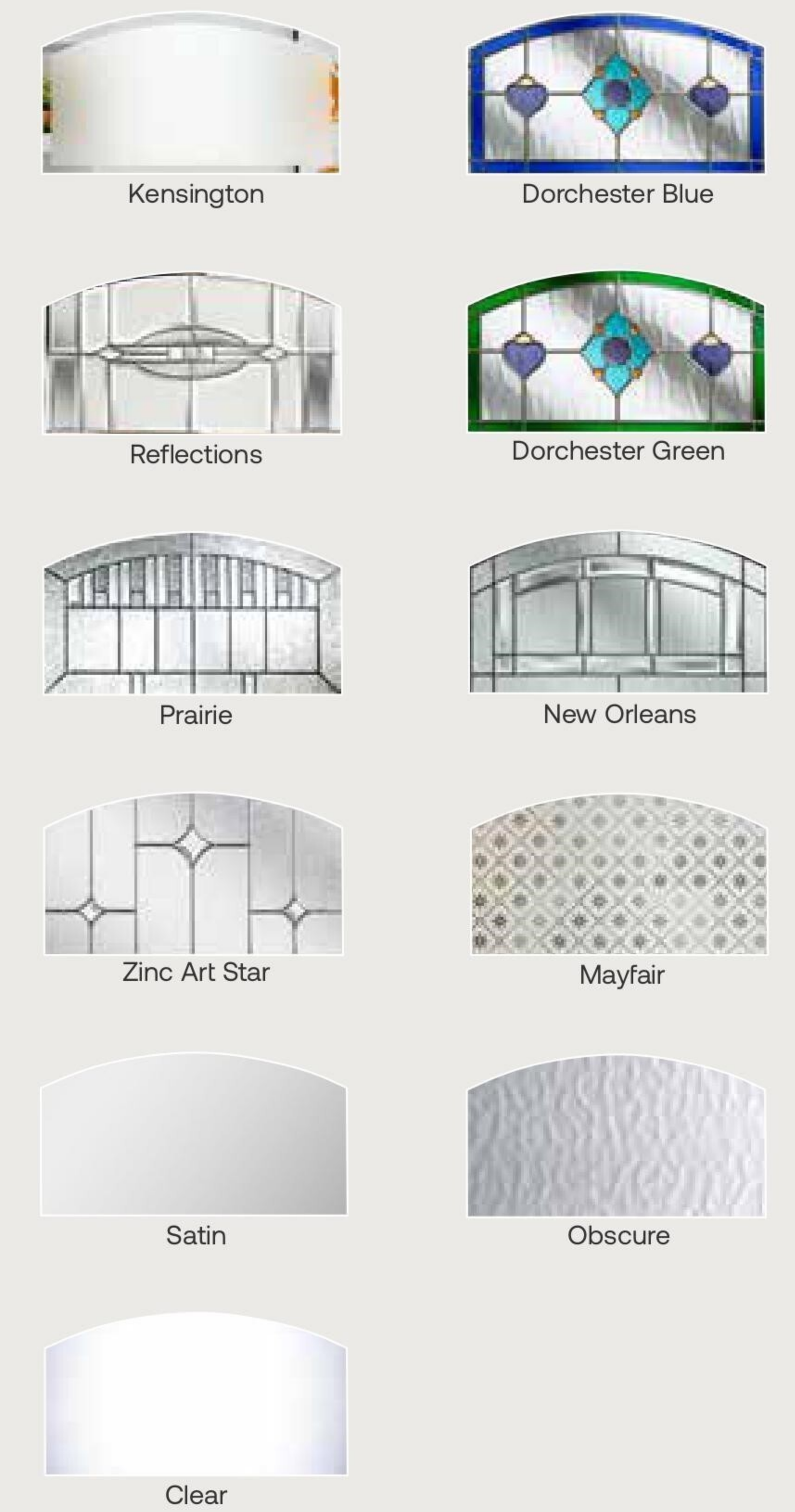
Images for illustrative purposes only. Alternative hardware placement must be specified at point of order and is subject to overall doorset width.
 *Glass tile is available in Red, Magenta, Blue, Green, Black or Grey



Westminster Glazing Options



Osborne Glazing Options



Colour options



Colour options



Images for illustrative purposes only. Alternative hardware placement must be specified at point of order **and is subject to overall doorset width.**
 *Glass tile is available in Red, Magenta, Blue, Green, Black or Grey

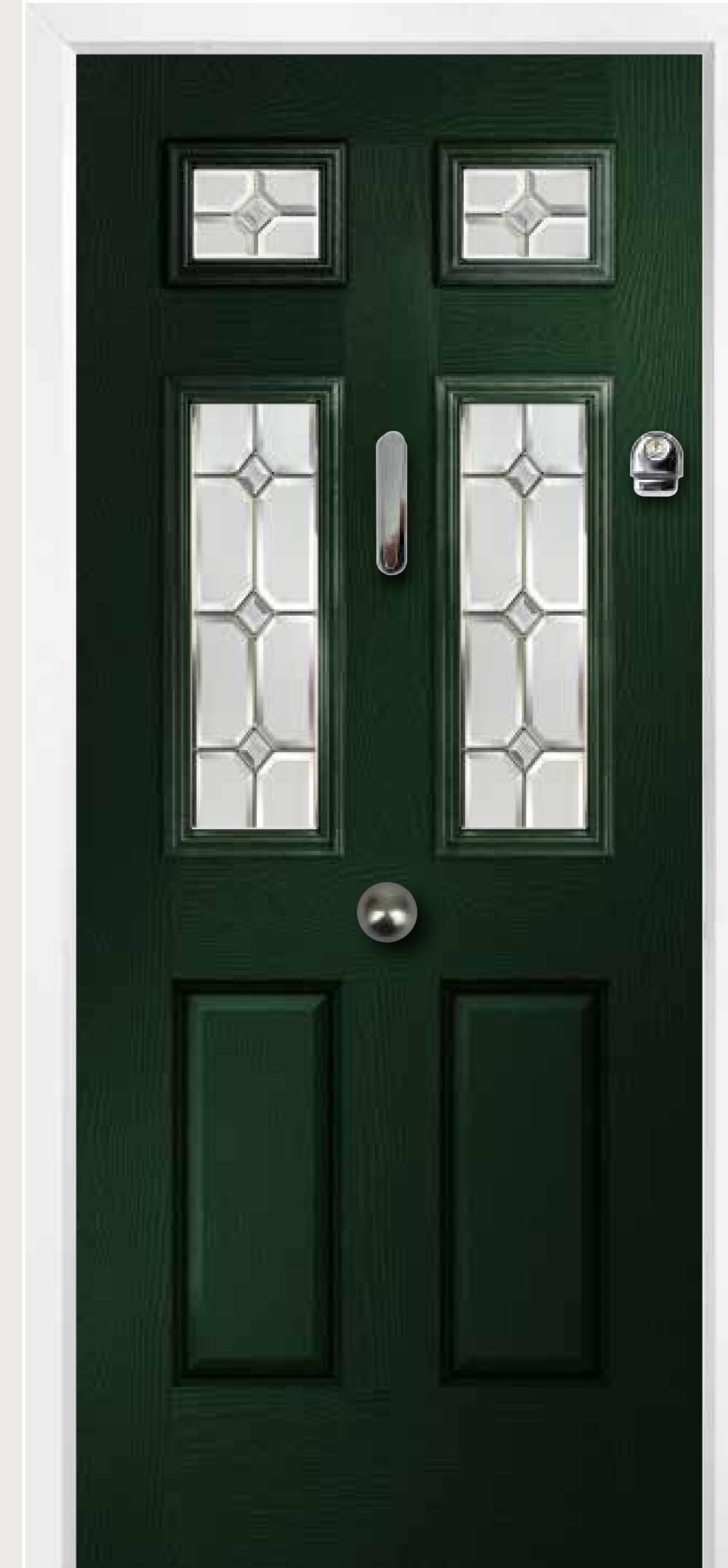
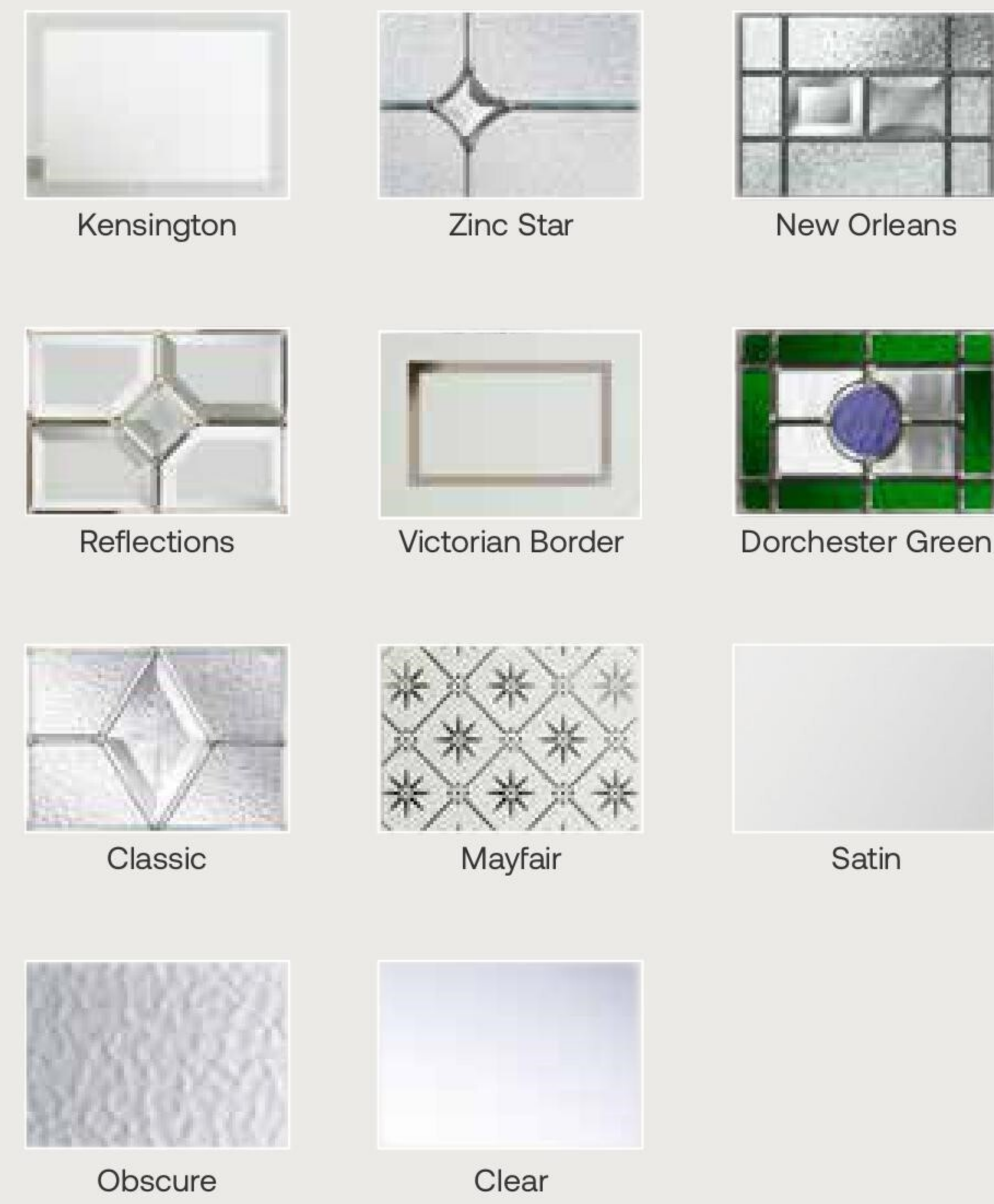
Images for illustrative purposes only. Alternative hardware placement must be specified at point of order **and is subject to overall doorset width.**

Carisbrooke 2 | Encore range

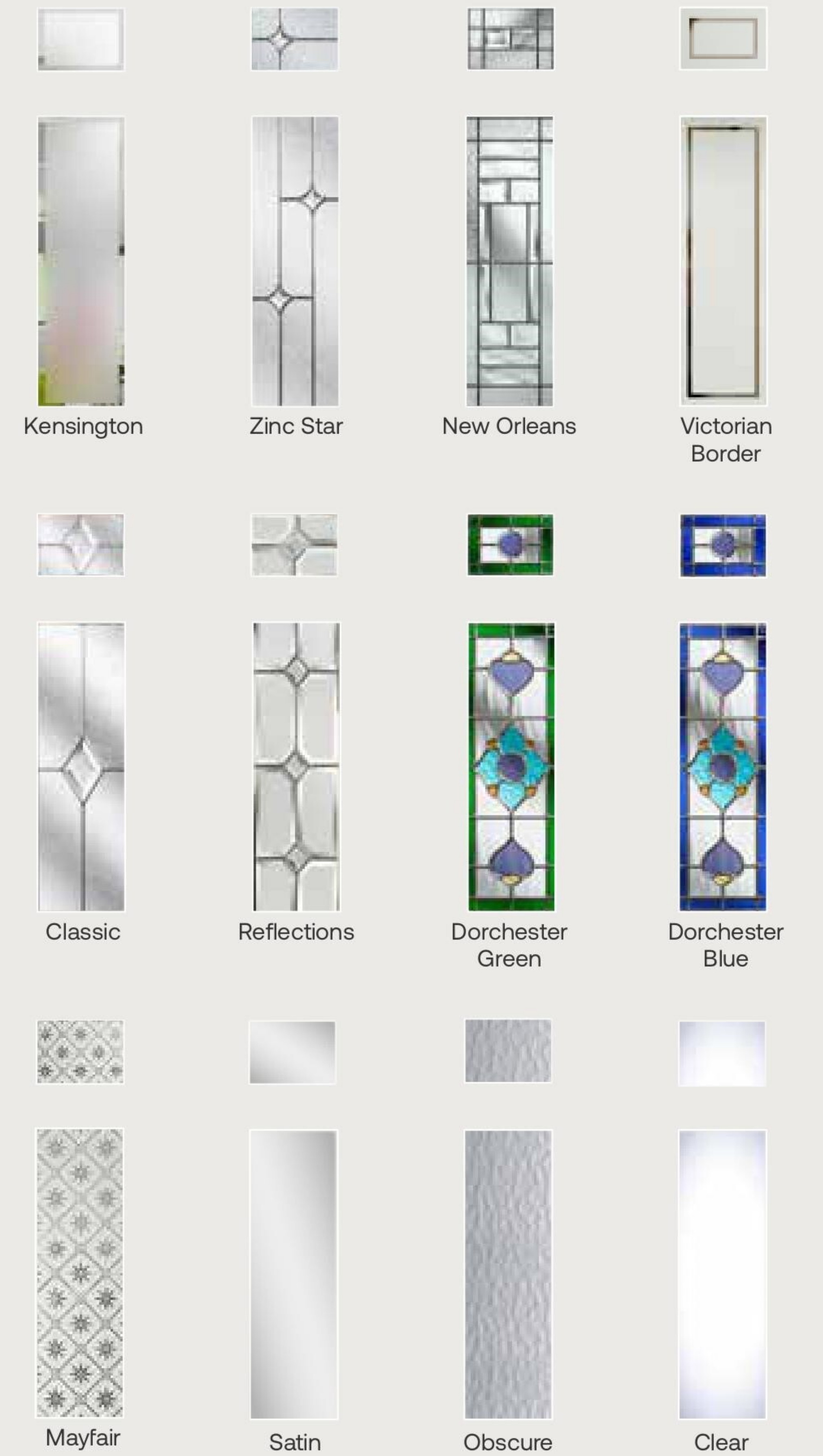
Carisbrooke 4 | Encore range



Carisbrooke 2 Glazing Options



Carisbrooke 4 Glazing Options



Colour options



Colour options

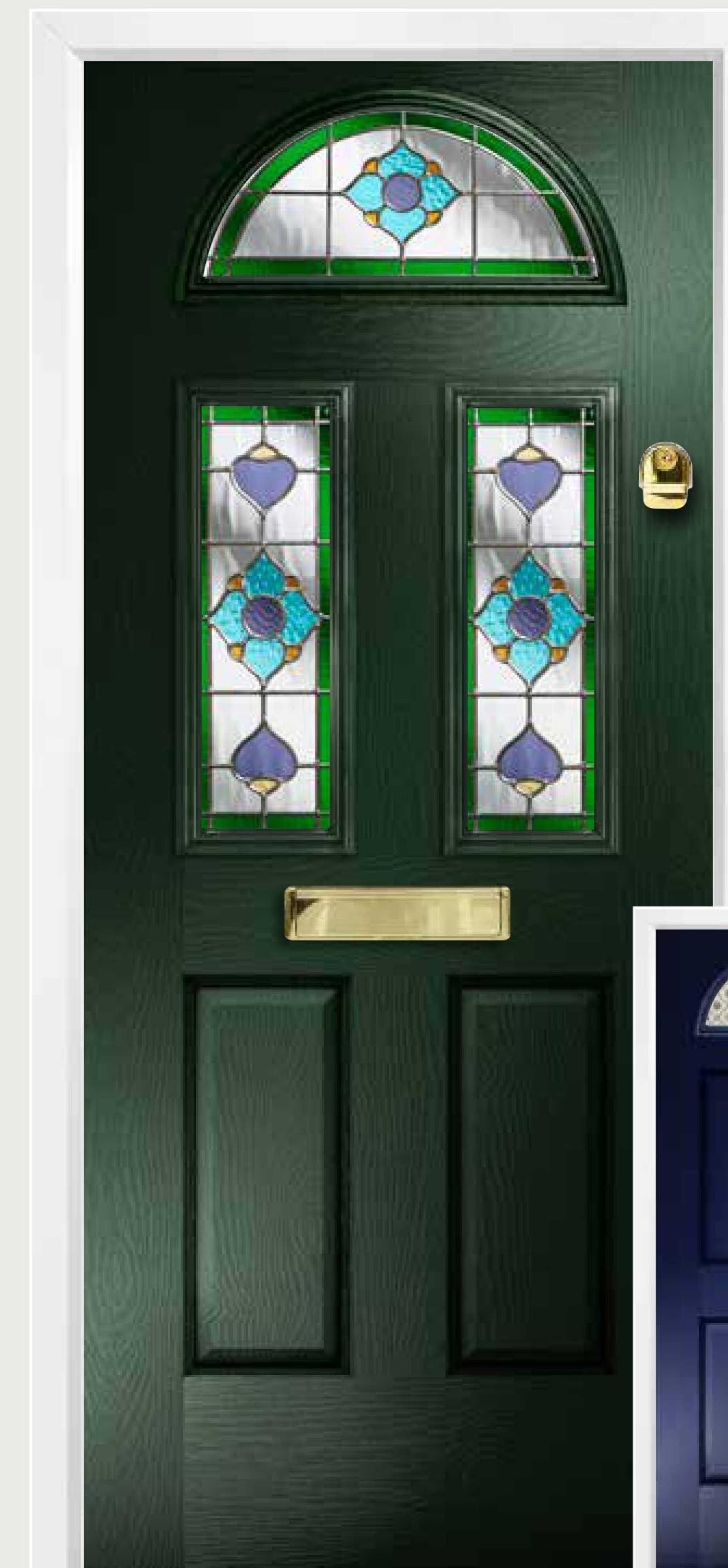


Images for illustrative purposes only. Alternative hardware placement must be specified at point of order **and is subject to overall doorset width.**

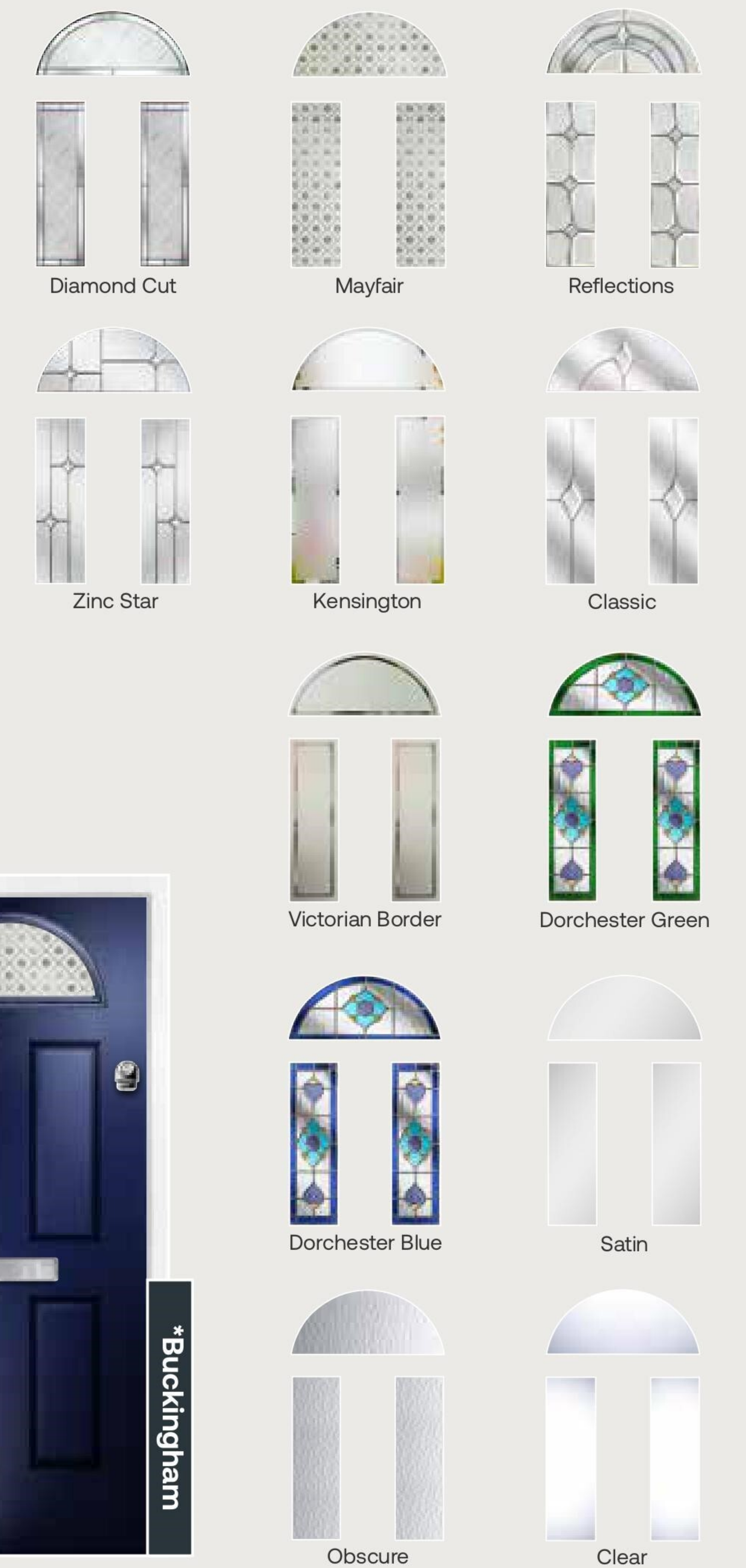
Images for illustrative purposes only. Alternative hardware placement must be specified at point of order **and is subject to overall doorset width.**



Balmoral Glazing Options



Buckingham 3 Glazing Options



Colour options



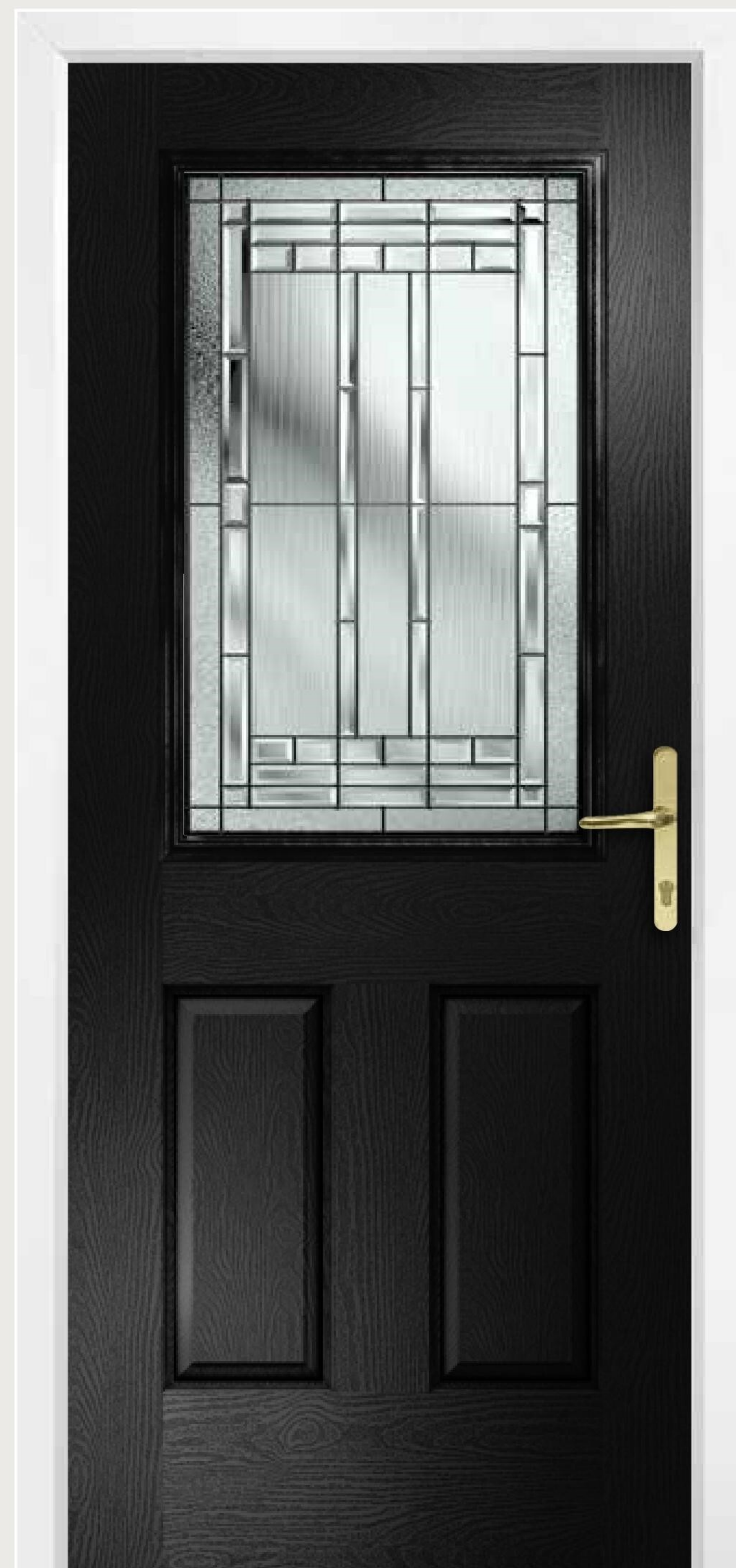
Images for illustrative purposes only. Alternative hardware placement must be specified at point of order and is subject to overall doorset width.

Colour options

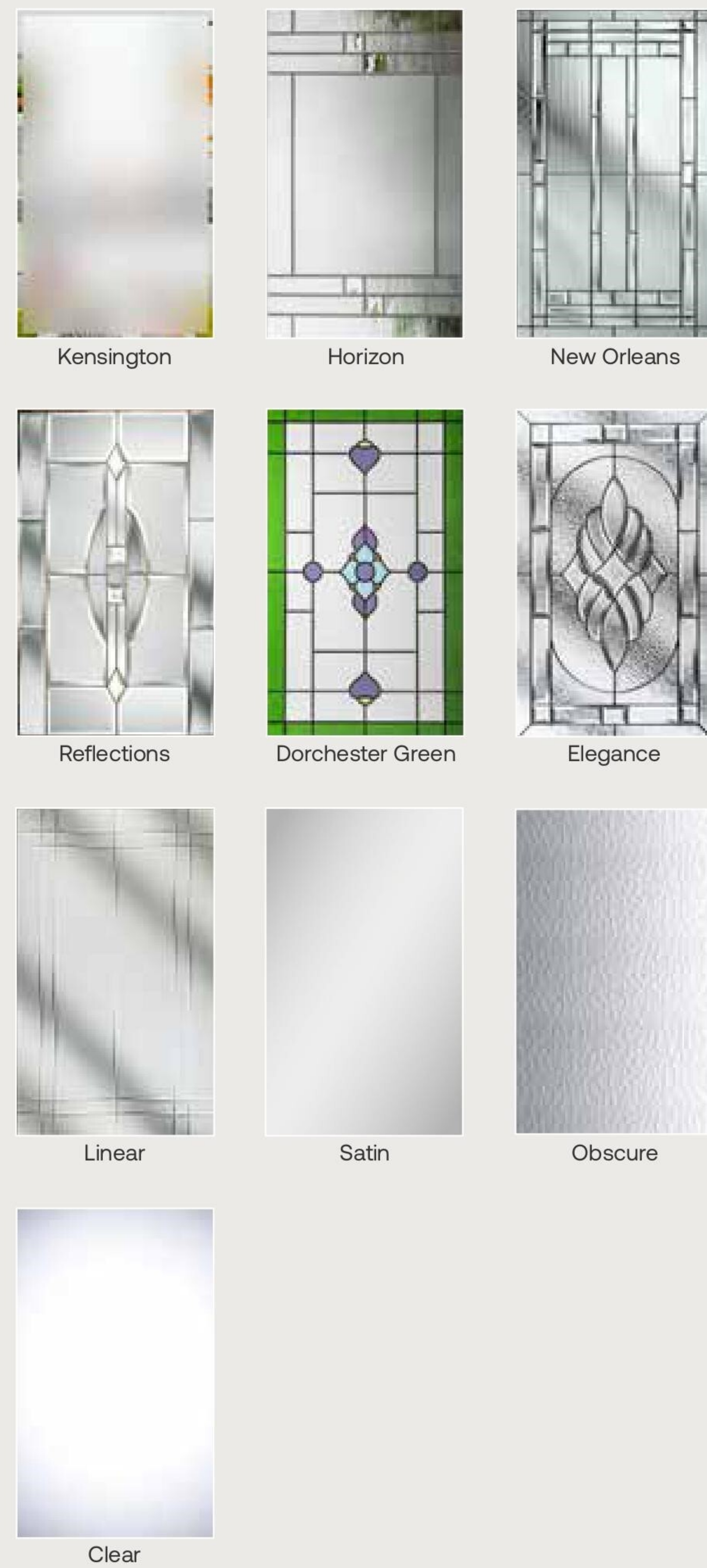


Images for illustrative purposes only. Alternative hardware placement must be specified at point of order and is subject to overall doorset width.

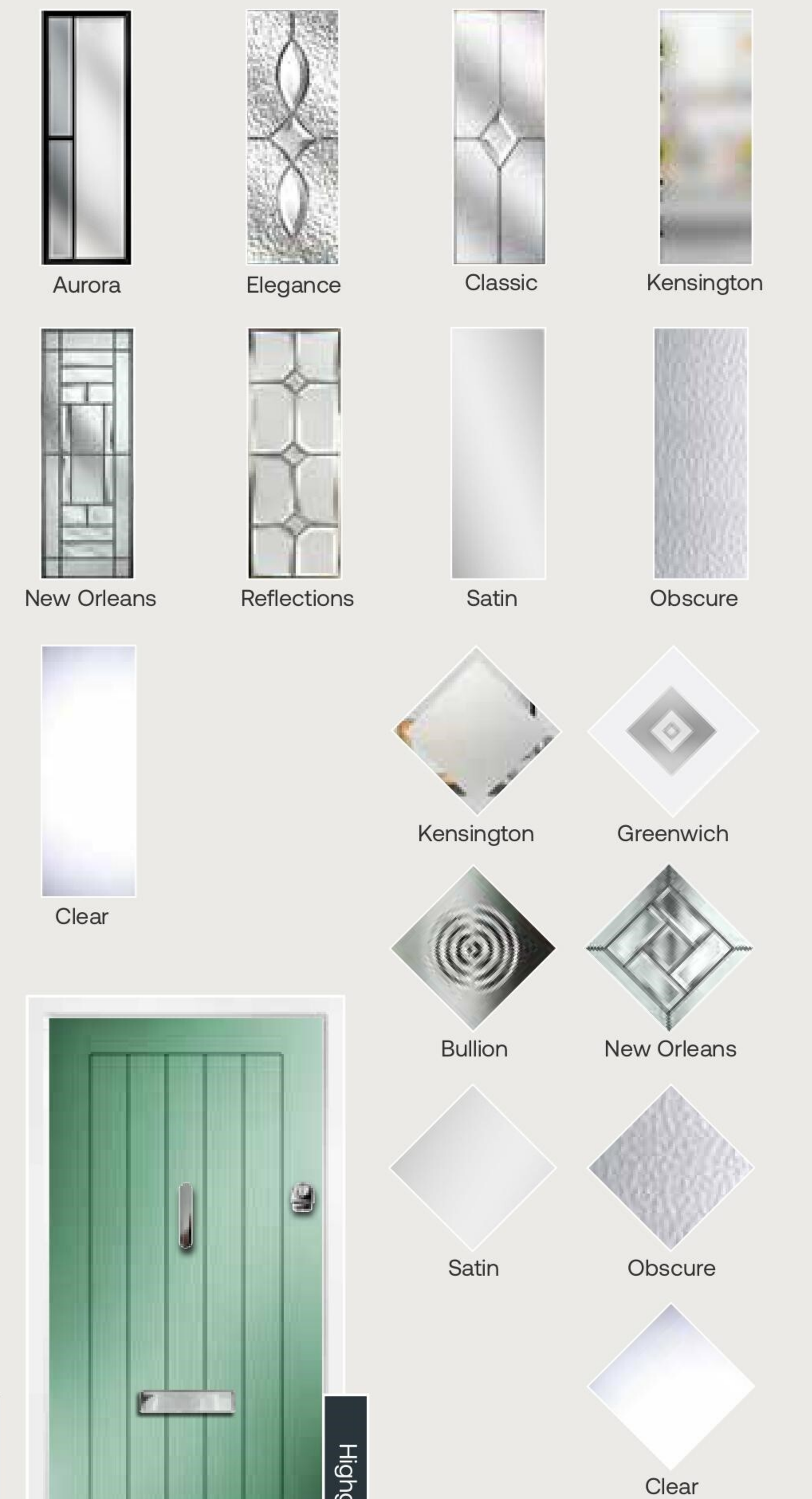
*Door Style also available as a Buckingham



Berkeley Glazing Options



Highgrove Glazing Options



Colour options



Images for illustrative purposes only. Alternative hardware placement must be specified at point of order **and is subject to overall doorset width.**

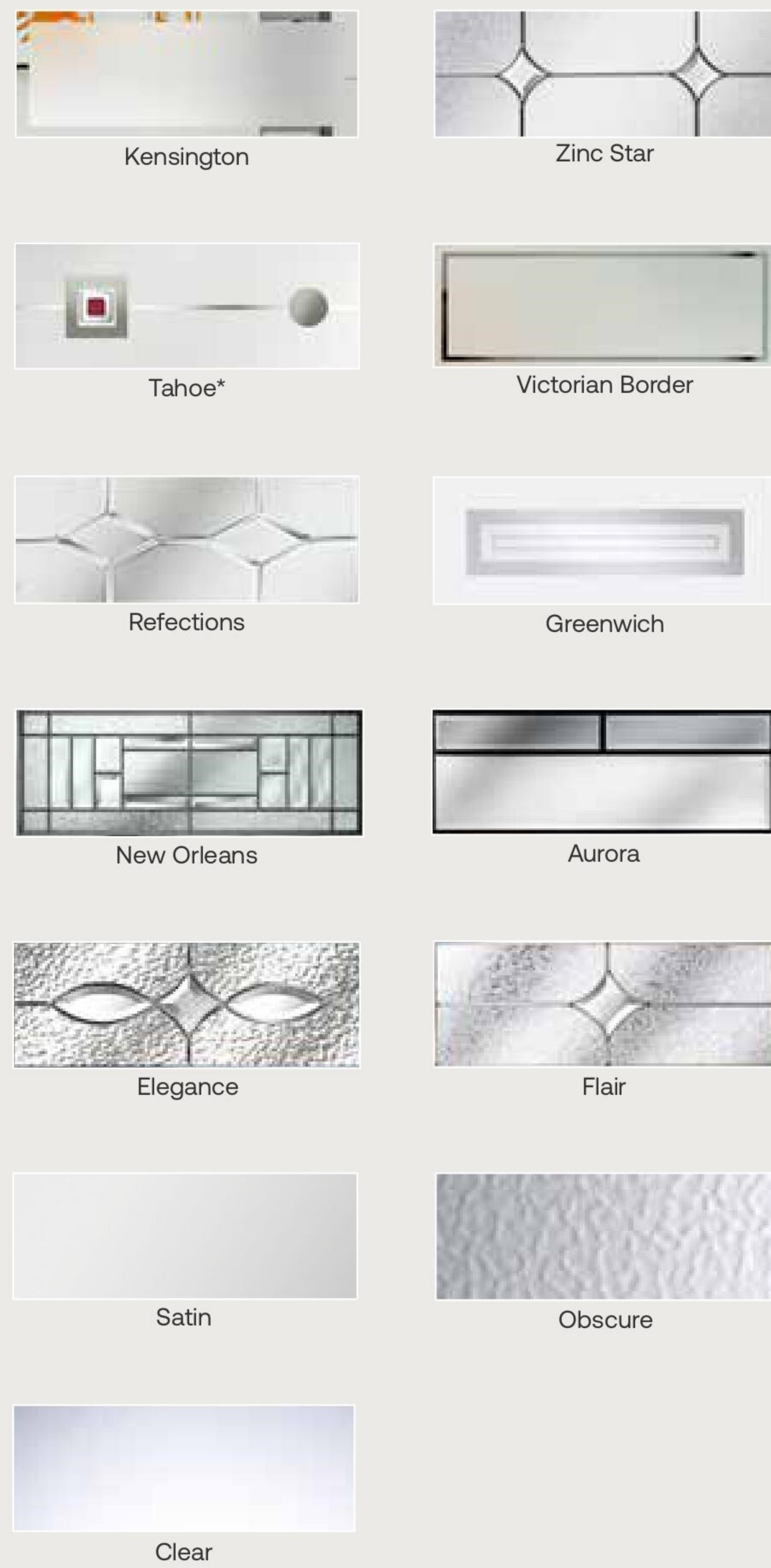
Colour options



Images for illustrative purposes only. Alternative hardware placement must be specified at point of order **and is subject to overall doorset width.**



Hampton Glazing Options



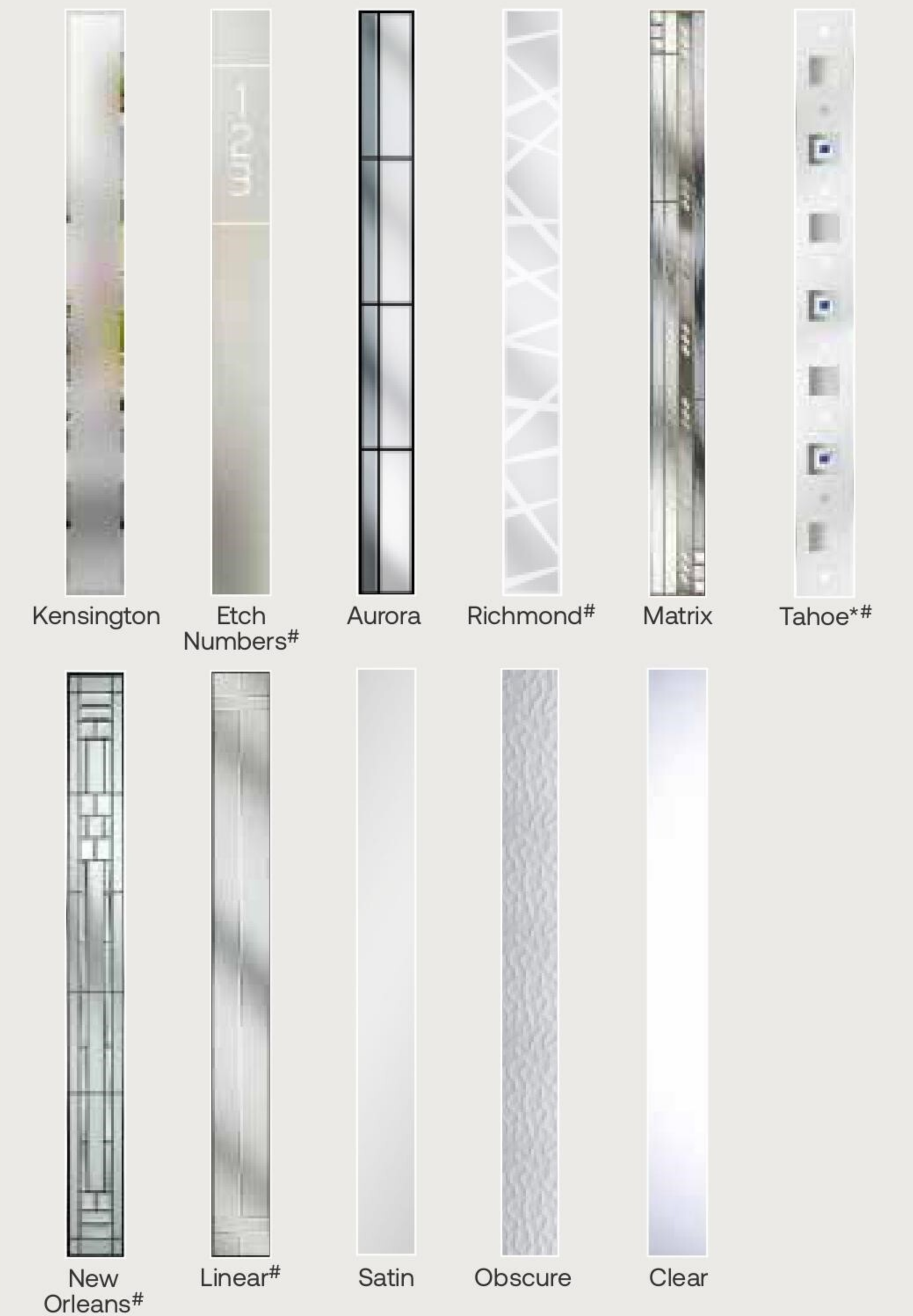
Colour options



Images for illustrative purposes only. Alternative hardware placement must be specified at point of order and is subject to overall doorset width.
*Glass tile is available in Red, Magenta, Blue, Green, Black or Grey



St. James Glazing Options



Colour options



Images for illustrative purposes only. Alternative hardware placement must be specified at point of order and is subject to overall doorset width.
*Glass tile is available in Red, Magenta, Blue, Green, Black or Grey # Glazing design not available in the St. James Mid.

Hardware Options

Premier range

AS
STANDARD
ON ALL
DOORS

Keeping things simple our **Premier Range** of furniture offer a great selection of entry level furniture. Due to the stainless steel outer design, these are particularly suited to coastal locations

Handles



Gold

Polished Chrome

Letter plates



Gold

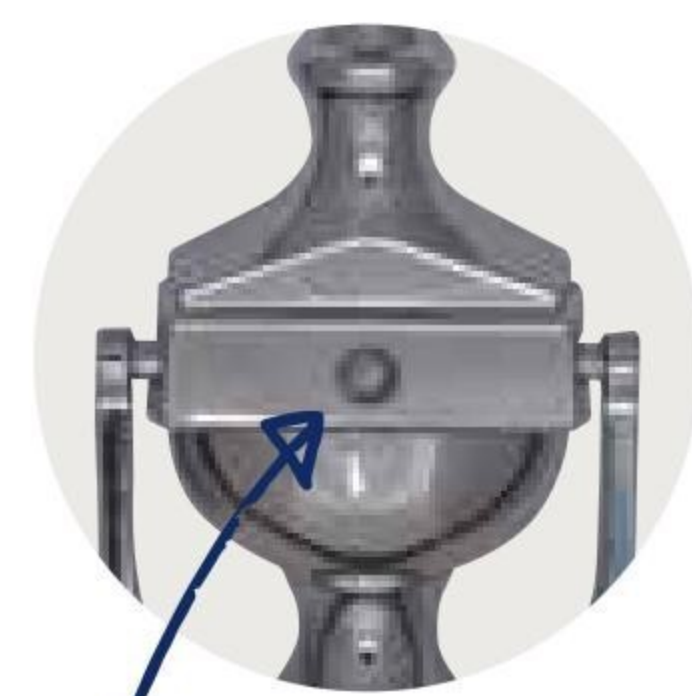
Polished Chrome

Urn Knockers



Gold

Polished Chrome



Urn knockers are also available with a viewer.

Letters & numerals



Gold

Gold



Polished Chrome

Polished Chrome

Hinge Range

SFS 2D-C Hinge

Available in: White, light brown, rosewood, black, chrome, gold, anthracite grey.



Hardware Options

Premier Plus range

With a wider selection of colours and accessories our **Premier Plus range** will be a great addition to your door.

Handles



Gold

Graphite

Chrome

Black

Antique Black

Urn Knockers



Gold

Chrome

Black



Graphite

Antique Black



Urn knockers are also available with a viewer.

Horse tail knocker



Gold

Chrome

Also available in black and antique black.

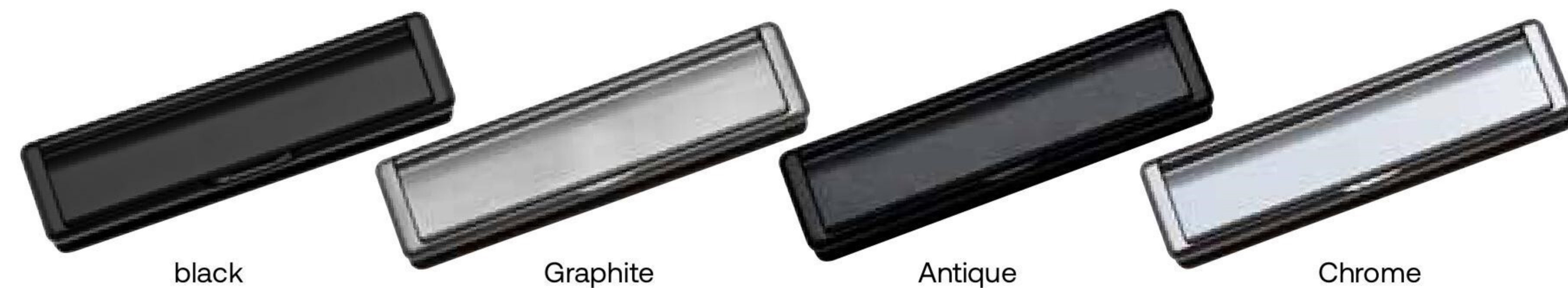
Hardware Options

Premier Plus range

Letter plates



Gold



black

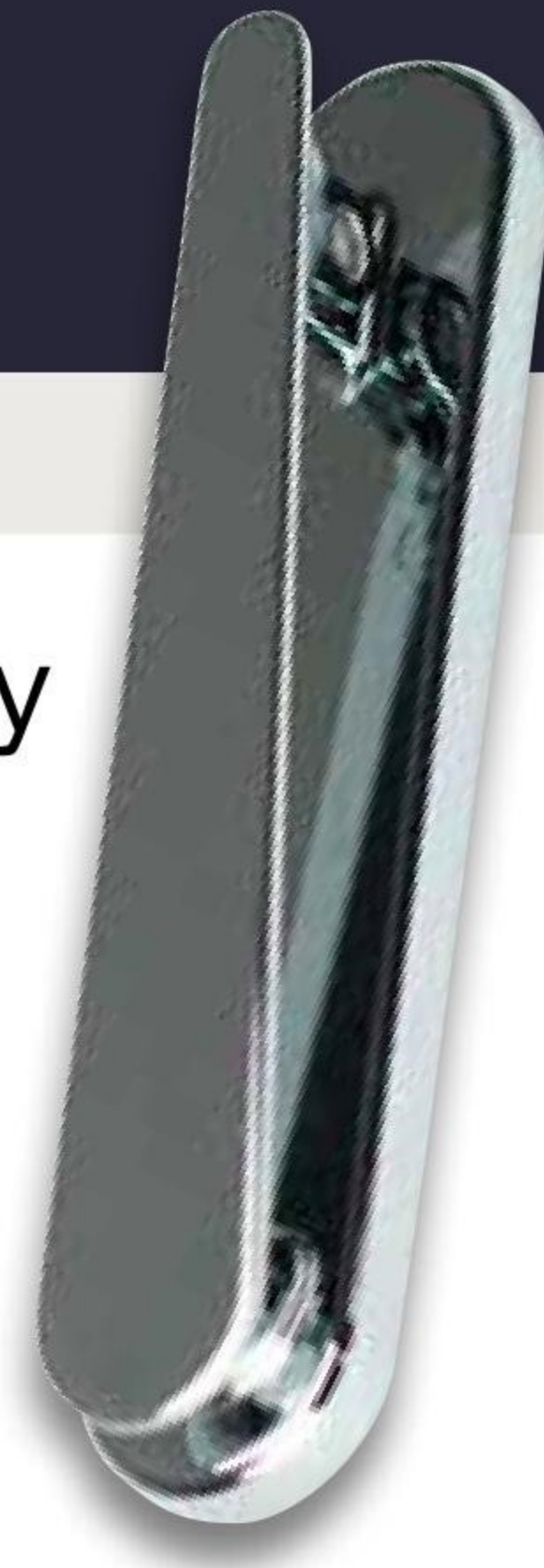
Graphite

Antique Black

Chrome

Contemporary Knocker

Available in gold, chrome, black, antique black.



Letters & numerals



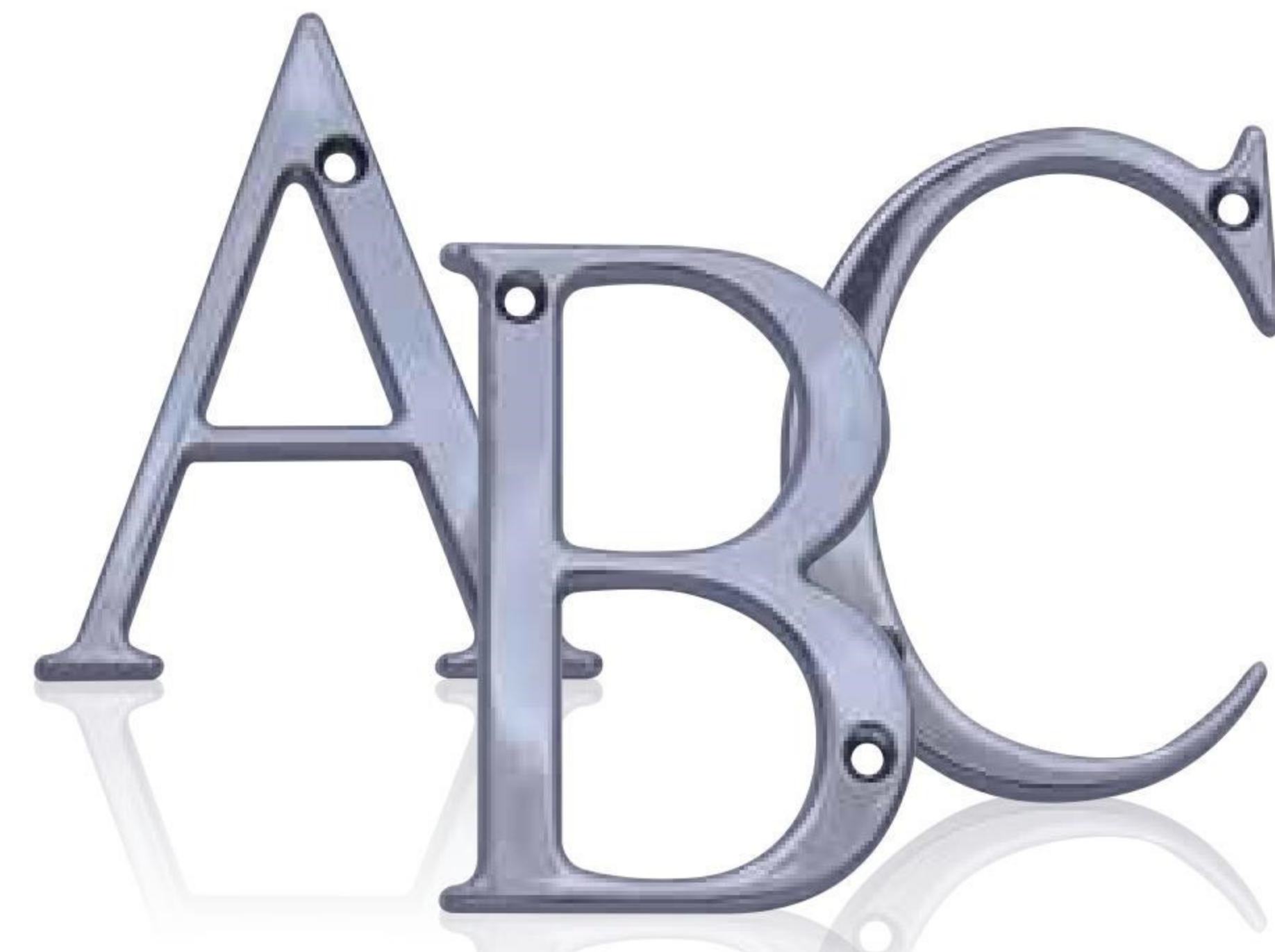
Gold



Black



Graphite



Chrome



Antique Black

Hardware Options

Deluxe range

Add the finishing touches to our contemporary door range using this sleek range of accessories.

Central knob



Brushed Steel

Yale 2* finger pull



Available in Gold and Chrome

Escutcheon

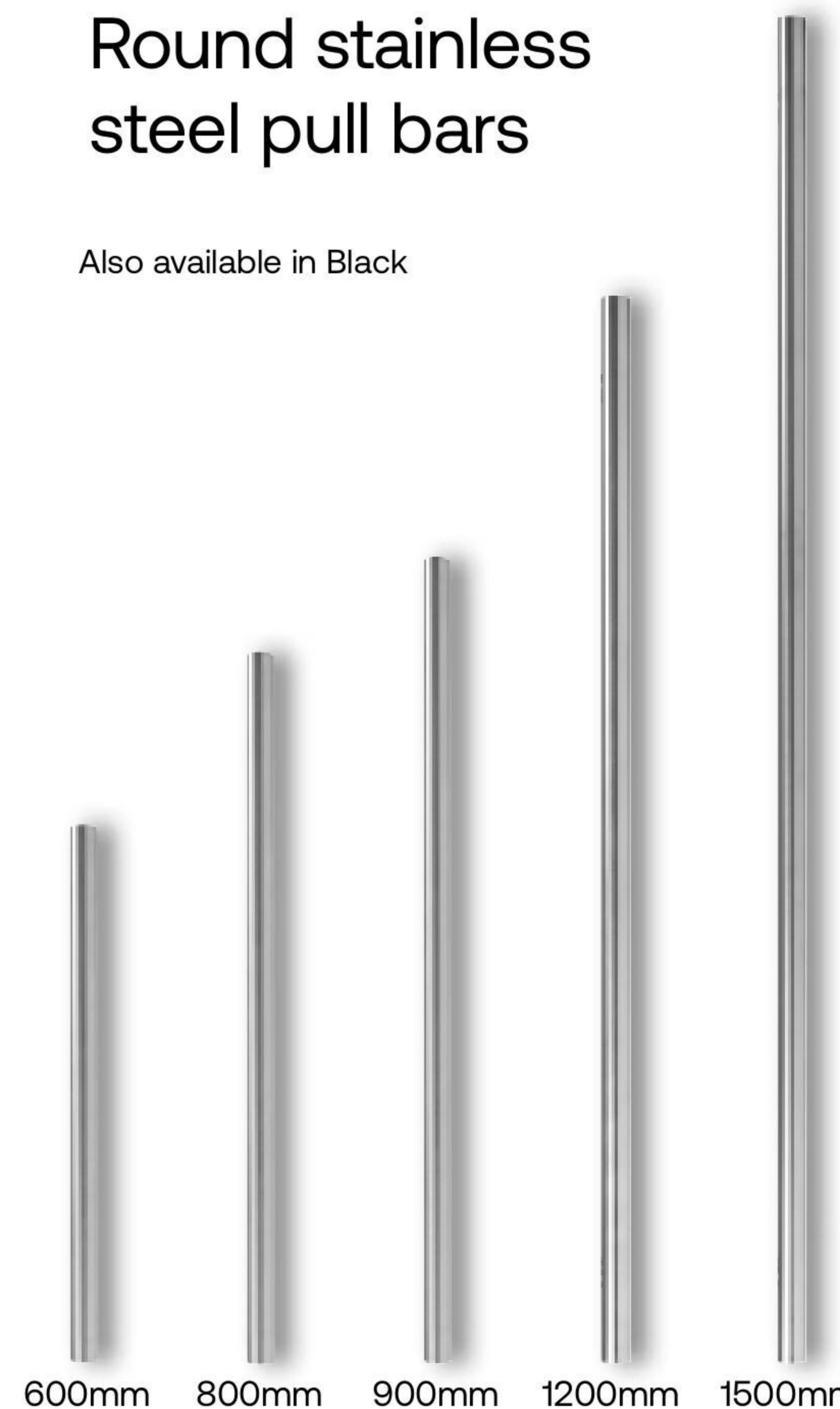


Available in Stainless Steel and Black



Round stainless steel pull bars

Also available in Black



600mm 800mm 900mm 1200mm 1500mm

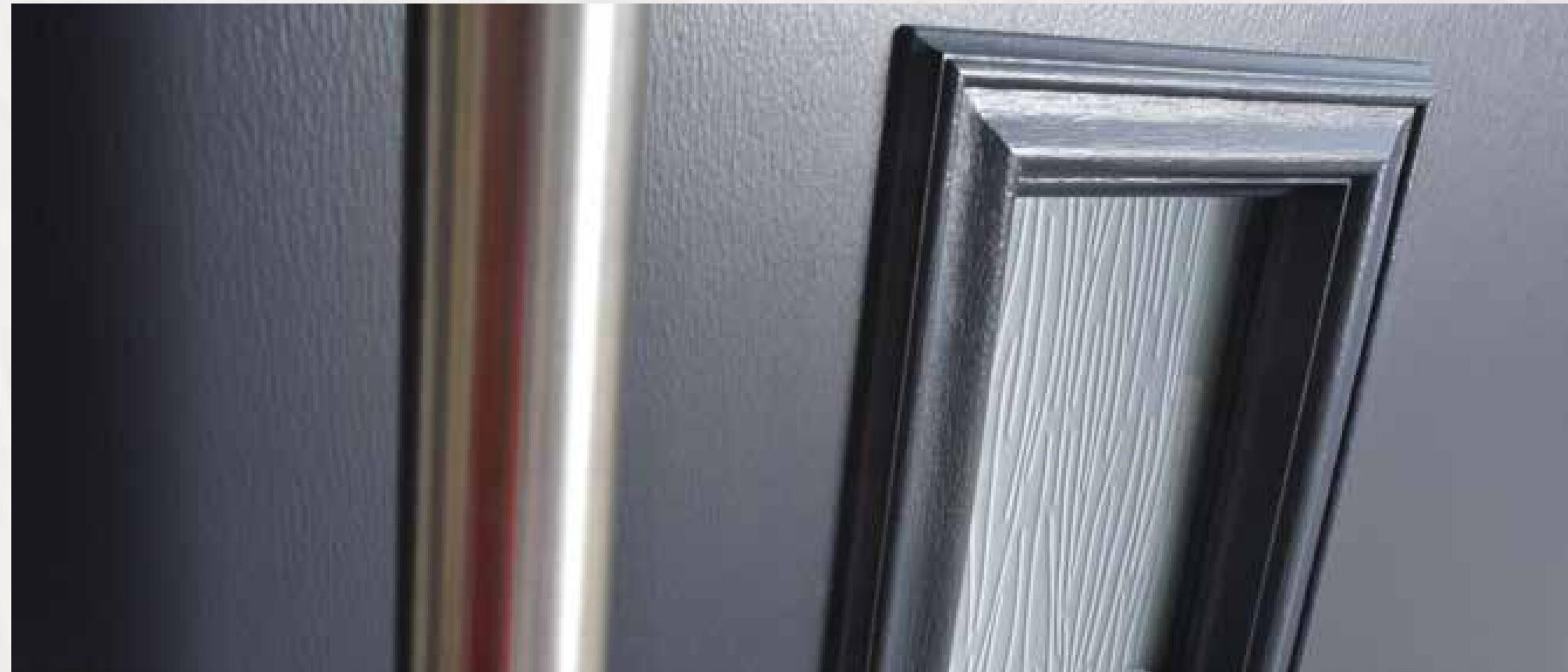
Rectangular stainless steel pull bars

Also available in Black



600mm 800mm 900mm 1200mm 1500mm

Patterned Glass Options | Encore range



Obscure glazed doors are available in a wide range of patterned glass options to meet your taste and privacy requirements. These can also be manufactured with safety glass where PAS24 security is required.

Obscure double glazed options

Doors which offer an obscure glass option can use any of the below designs.



Stippolyte*



Arctic



Autumn



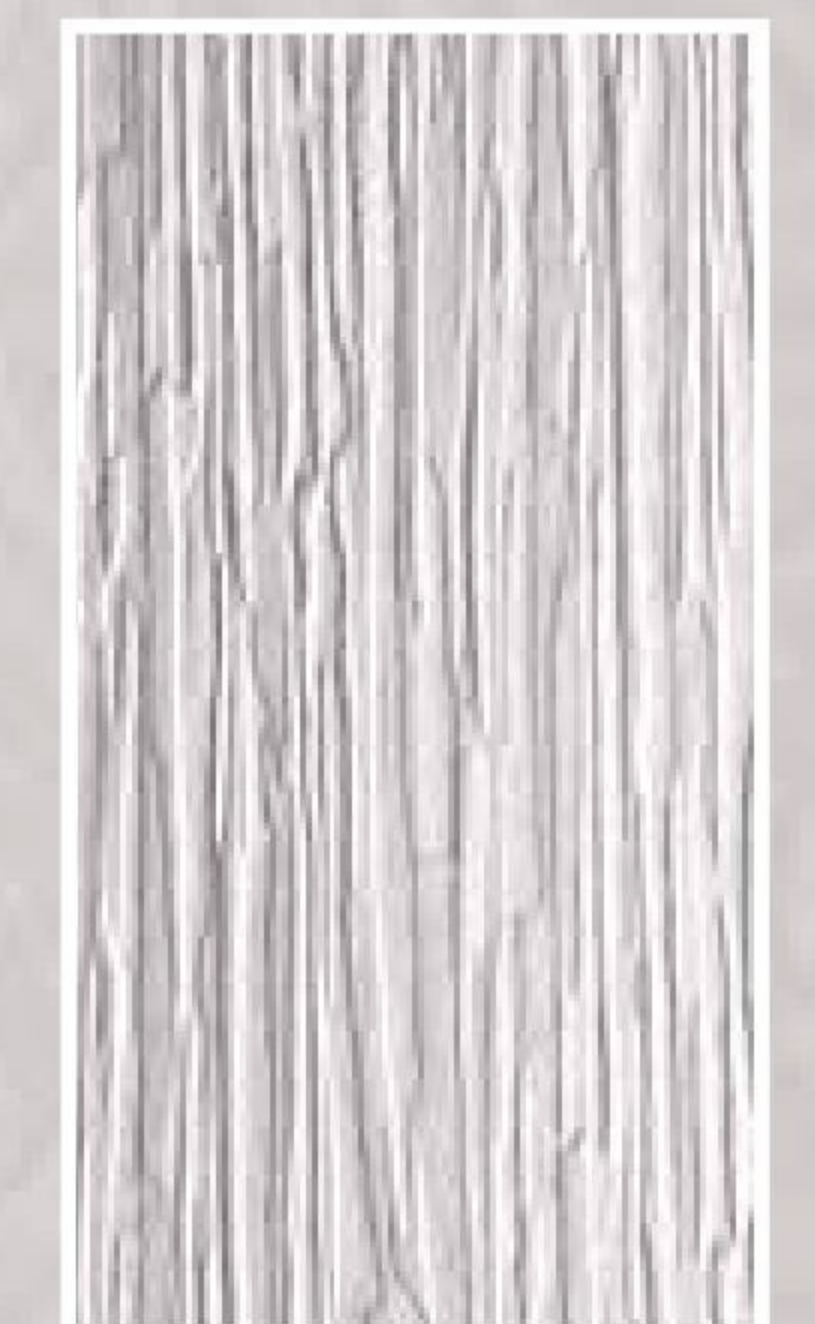
Chantilly



Charcoal



Contora



Cotswold*



Digital



Minster*



Taffetta



Everglade



Pelerine



Flemish



Florielle



Mayflower



Oak



Sycamore

* Available on a 10 day lead-time.

